

Exhibit I

**State of Illinois Attorney General
Illinois EPA
KCBX Terminals Company
December 5, 2013**

Prepared by KCBX Terminals Company
Confidential Business Information
Confidential Settlement Communication

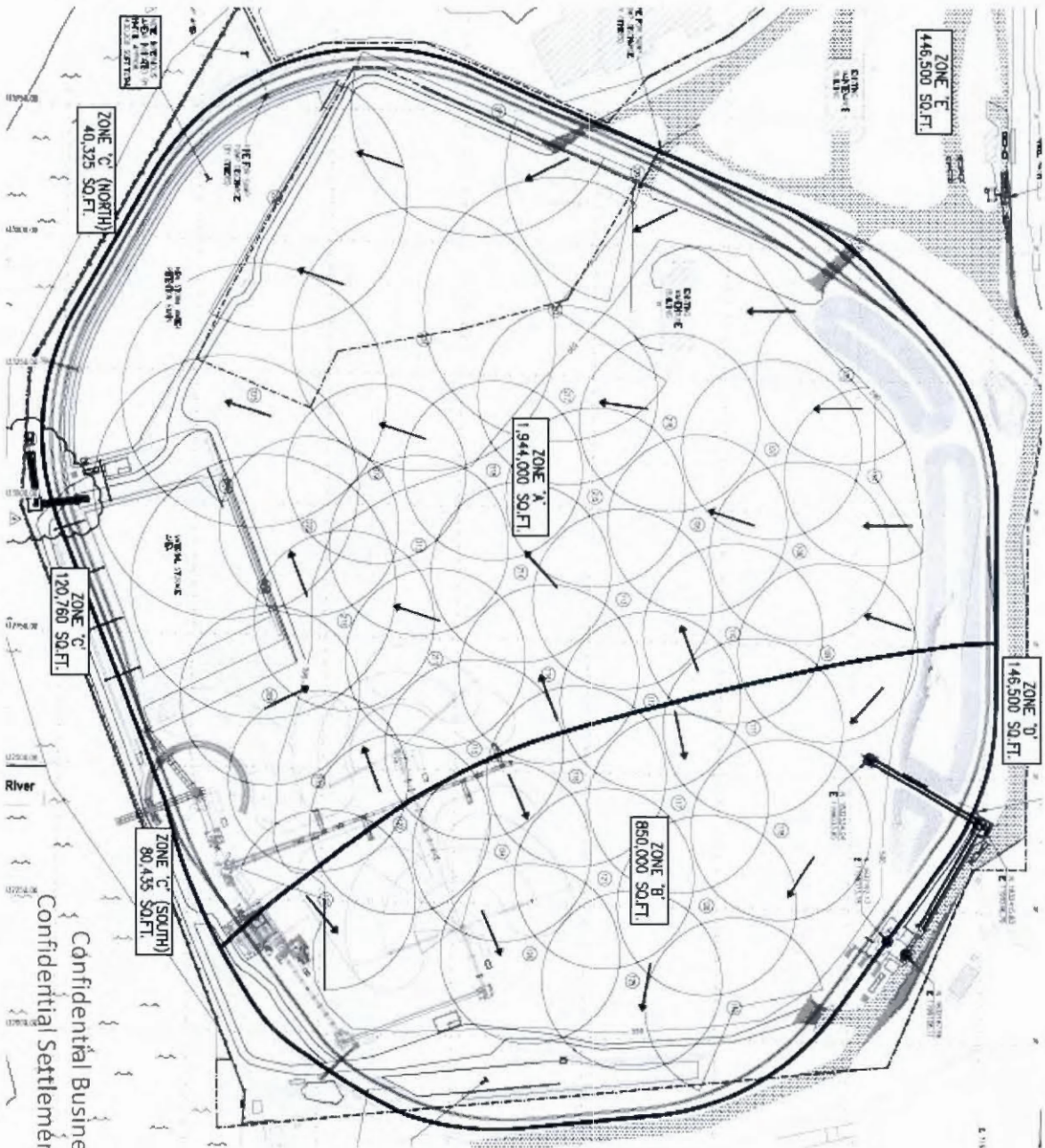
Presentation Outline

- Business Overview – Severson
- Terminal Overview – Estadt
- Dust Mitigation System Overview – Estadt
- Questions

Business Overview

Confidential Business Information
Confidential Settlement Communication

KCBX South Terminal Overview



Confidential Business Information
Confidential Settlement Communication

Typical Inbound Transportation Modes

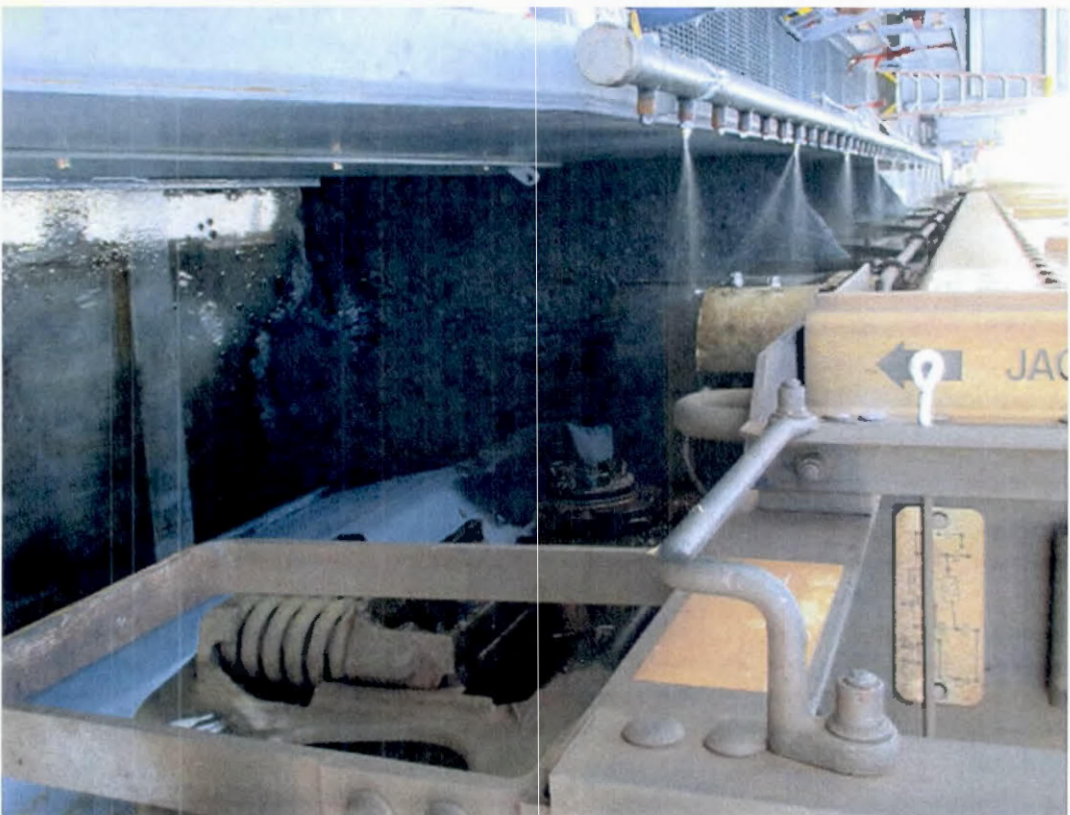
- Rail Car Delivery (coal and pet coke)
 - Bottom Car Dumper (car bottom doors)
 - Rotary Car Dumper
- River Barge (pet coke)

Bottom Dump System ("Ashross")



Confidential Business Information
Confidential Settlement Communication

Bottom Dump System



Confidential Business Information
Confidential Settlement Communication

Bottom Dump System



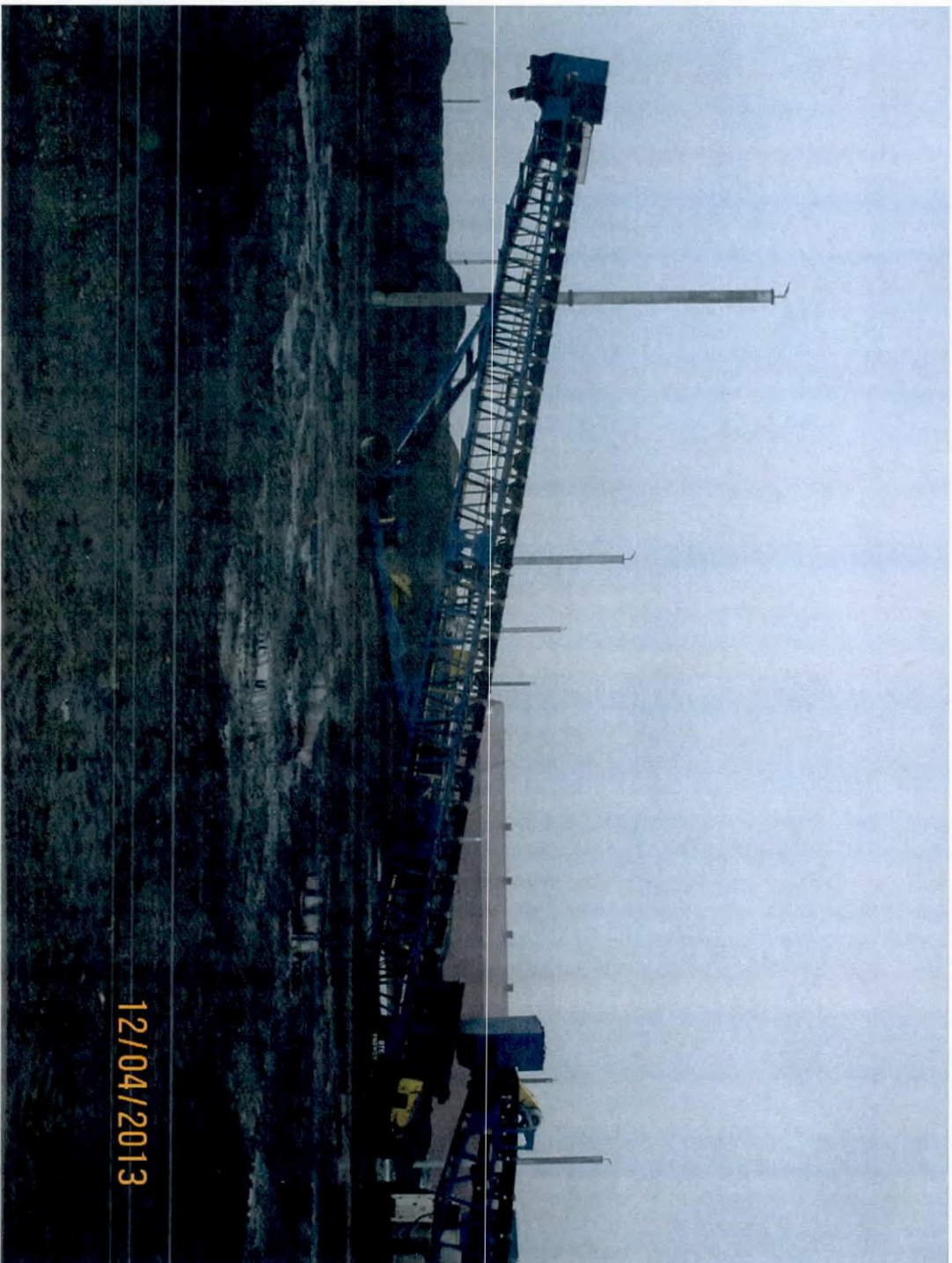
Confidential Business Information
Confidential Settlement Communication

Bottom Dump System



Confidential Business Information
Confidential Settlement Communication

Portable Conveyors



12/04/2013

Confidential Business Information
Confidential Settlement Communication

Rotary Dump System



Confidential Business Information
Confidential Settlement Communication

Rotary Dump System



Confidential Business Information
Confidential Settlement Communication

Barge Unloading System



Confidential Business Information
Confidential Settlement Communication

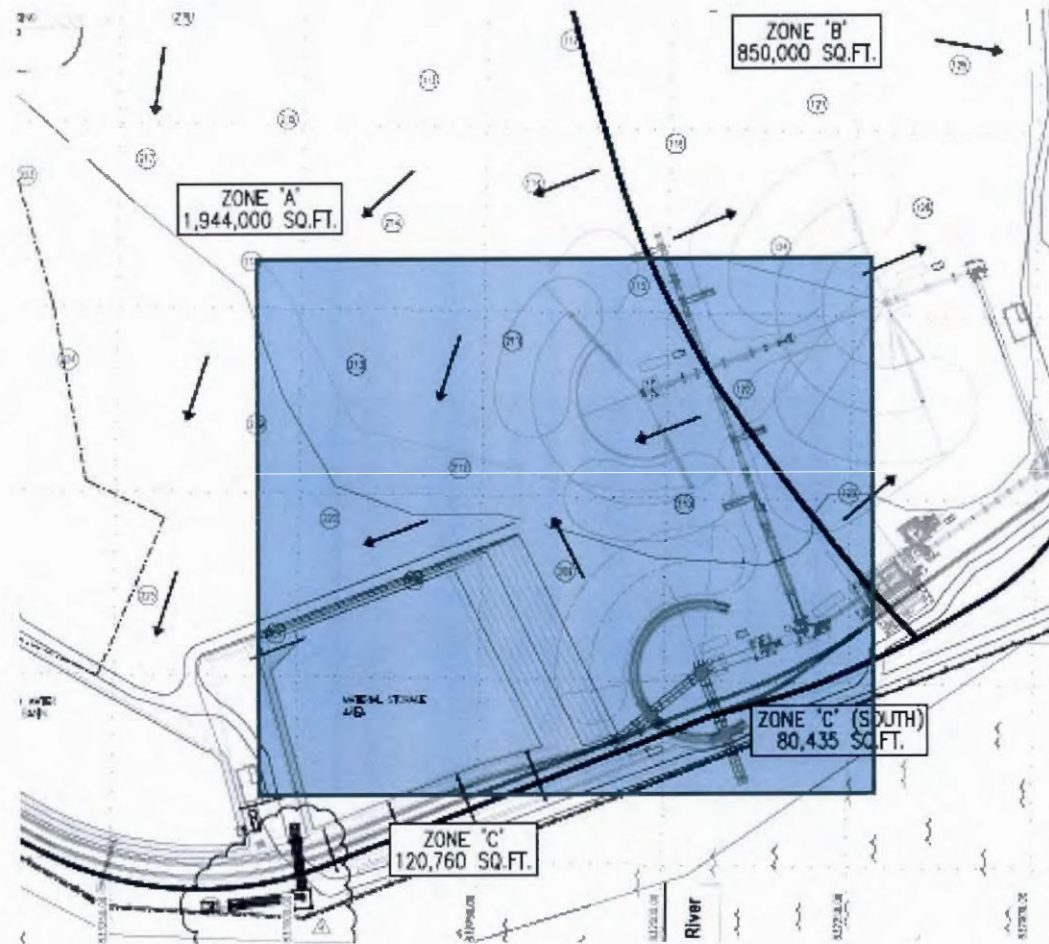
Product Transfers

- Pre-staging products for shipment
- Pile management and grooming
- Blending activity

Typical Outbound Modes

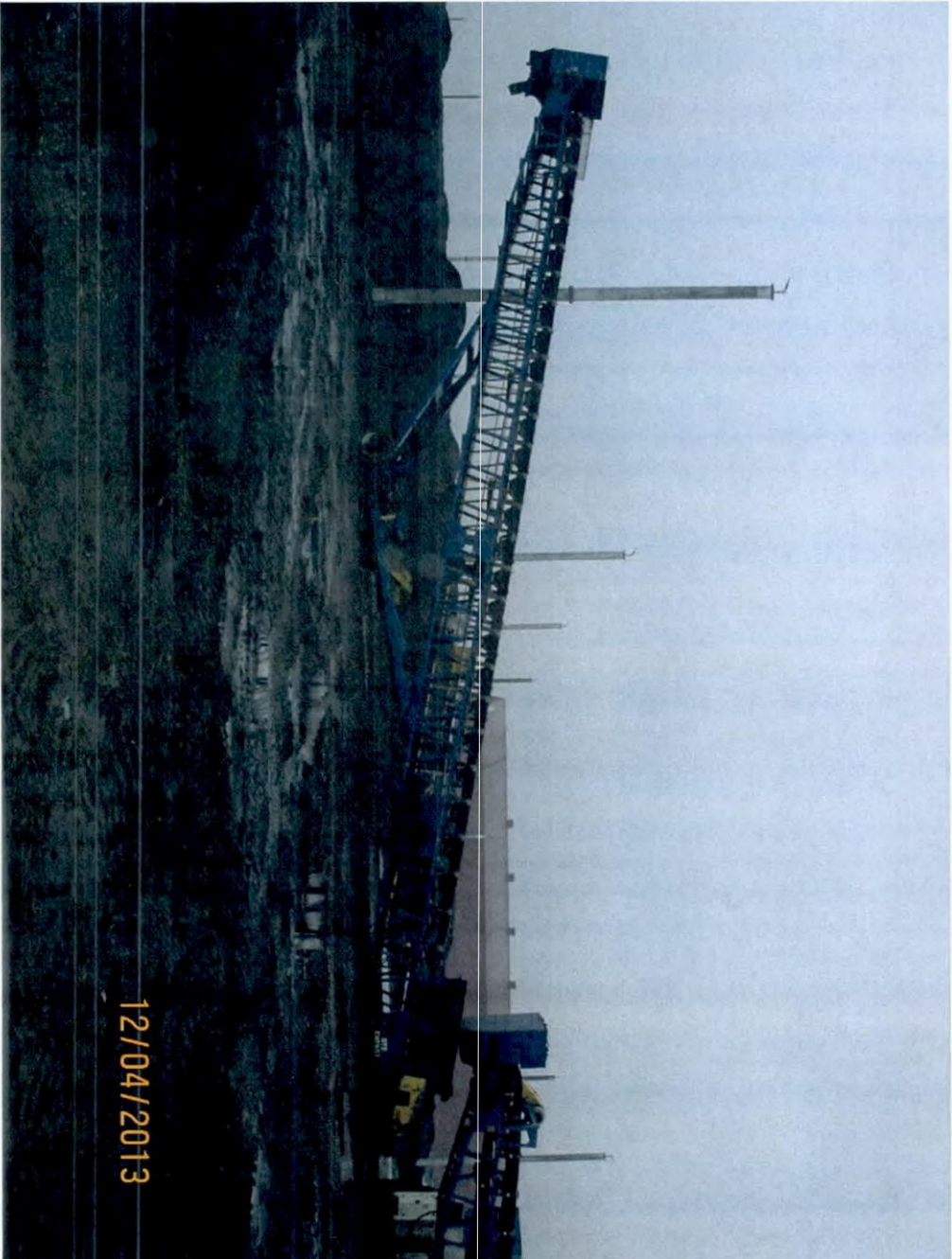
- Vessels via ship loader
- Barge via ship loader
- Trucks (coal - local market only)

Product Load-Out Example (Vessel/Barge Loading)



Confidential Business Information
Confidential Settlement Communication

Portable Conveyors



Confidential Business Information
Confidential Settlement Communication

Typical Barge/Vessel Loading

(pre-acquisition photo)



Confidential Business Information
Confidential Settlement Communication

Monthly Inbound/Outbound Shipments (K tons)

	Jan-13	Feb-13	Mar-13	Apr-13	May-13
Total Coal IN	0	0	0	0	0
Total Coal Out	0	0	-1	-19	-20
Total Coke IN	17	0	0	0	0
Total Coke Out	0	0	0	-3	-5

	Jun-13	Jul-13	Aug-13	Sep-13	Oct-13
Total Coal IN	0	0	0	0	1
Total Coal Out	-20	-23	-32	-39	-74
Total Coke IN	12	34	15	13	24
Total Coke Out	-3	0	-52	-41	-21

Dust Mitigation System Overview

Confidential Business Information
Confidential Settlement Communication

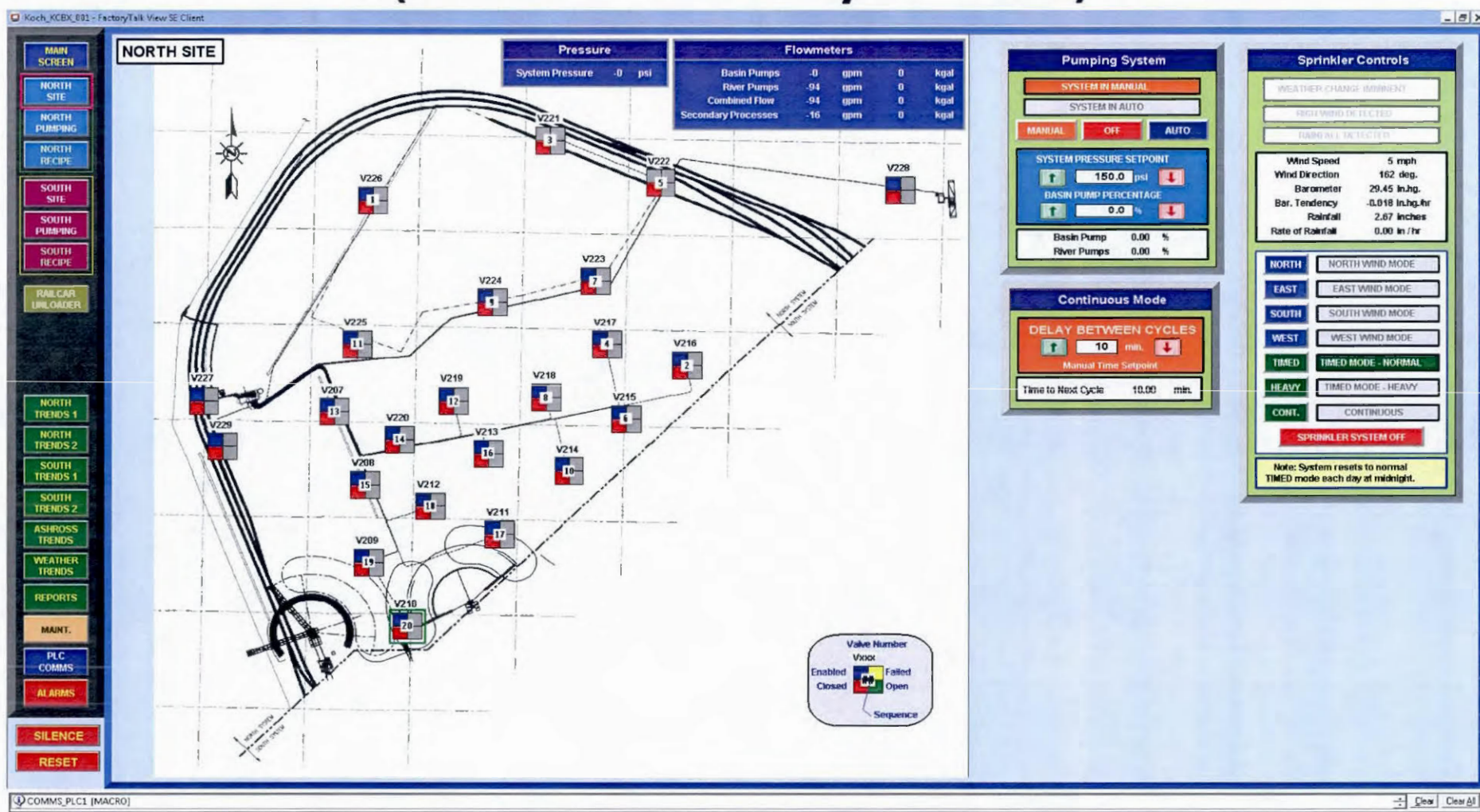
System Components

- Water Cannon Sprays
 - Automation system
 - Proactive weather monitoring
- Surfactant and encrusting product addition
- Spray bars on conveyors and transfer points
- Water trucks
- Truck wheel wash
- Street sweeper (inside and outside terminal)

System Components (cont.)

- Best Management Practices
 - Choke feeding
 - Pile management and grooming
 - Daily weather forecasting
 - Suspension of operations
- Training
 - Employees
 - Contractors
 - Truck Drivers

Cannon Control System Overview (one of two systems)



Water Retention Basin



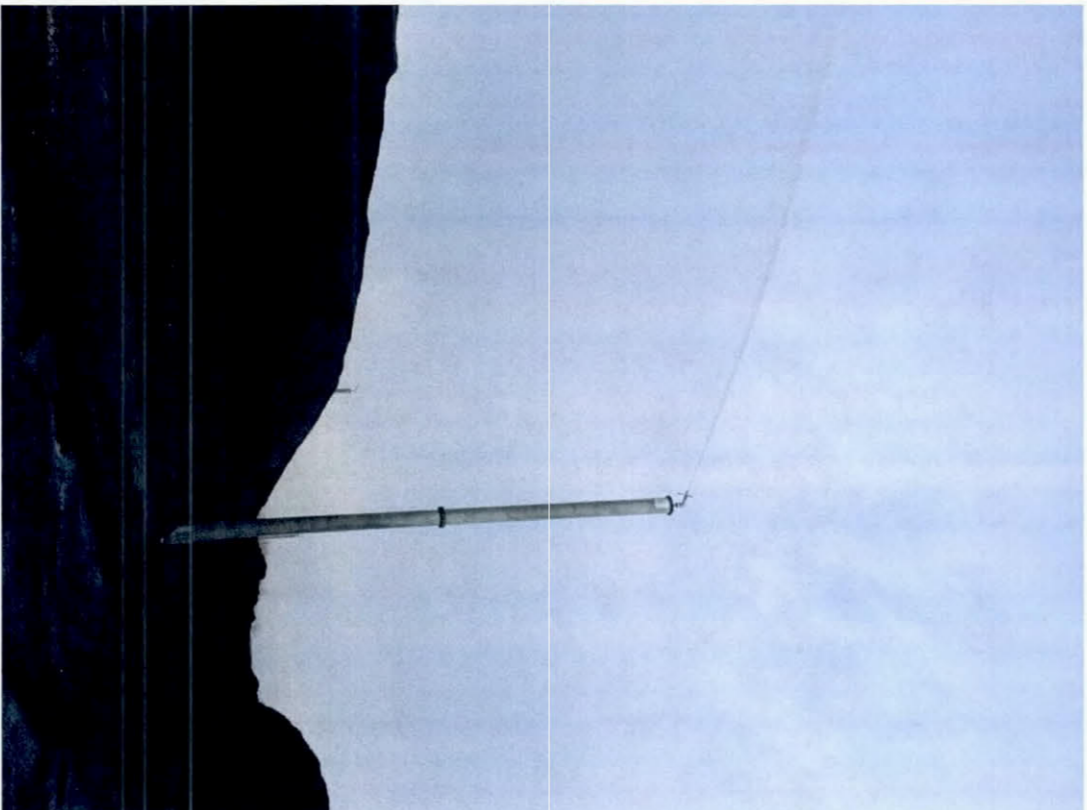
Confidential Business Information
Confidential Settlement Communication

Pump / Piping Distribution



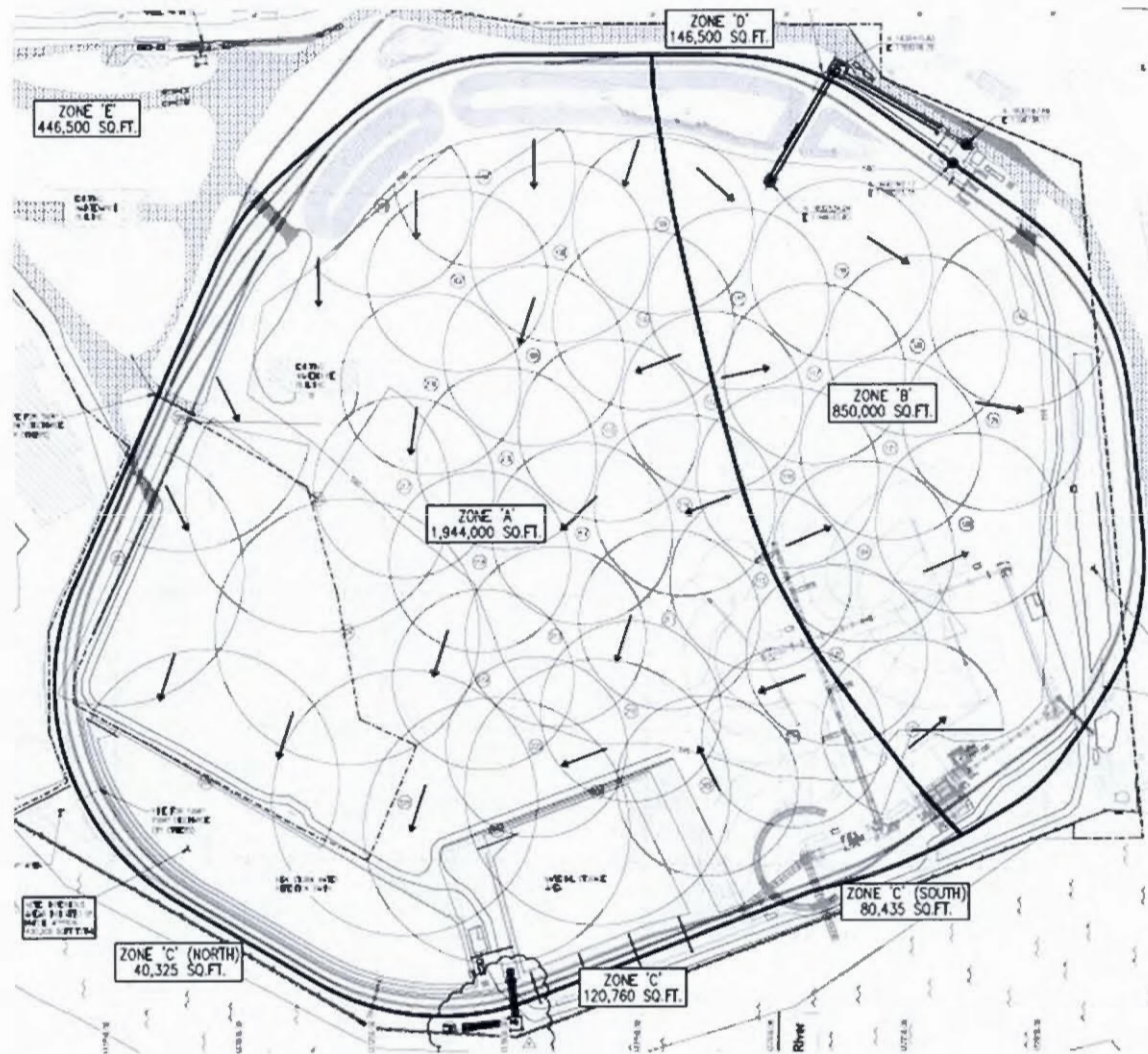
Confidential Business Information
Confidential Settlement Communication

Water Cannon Poles



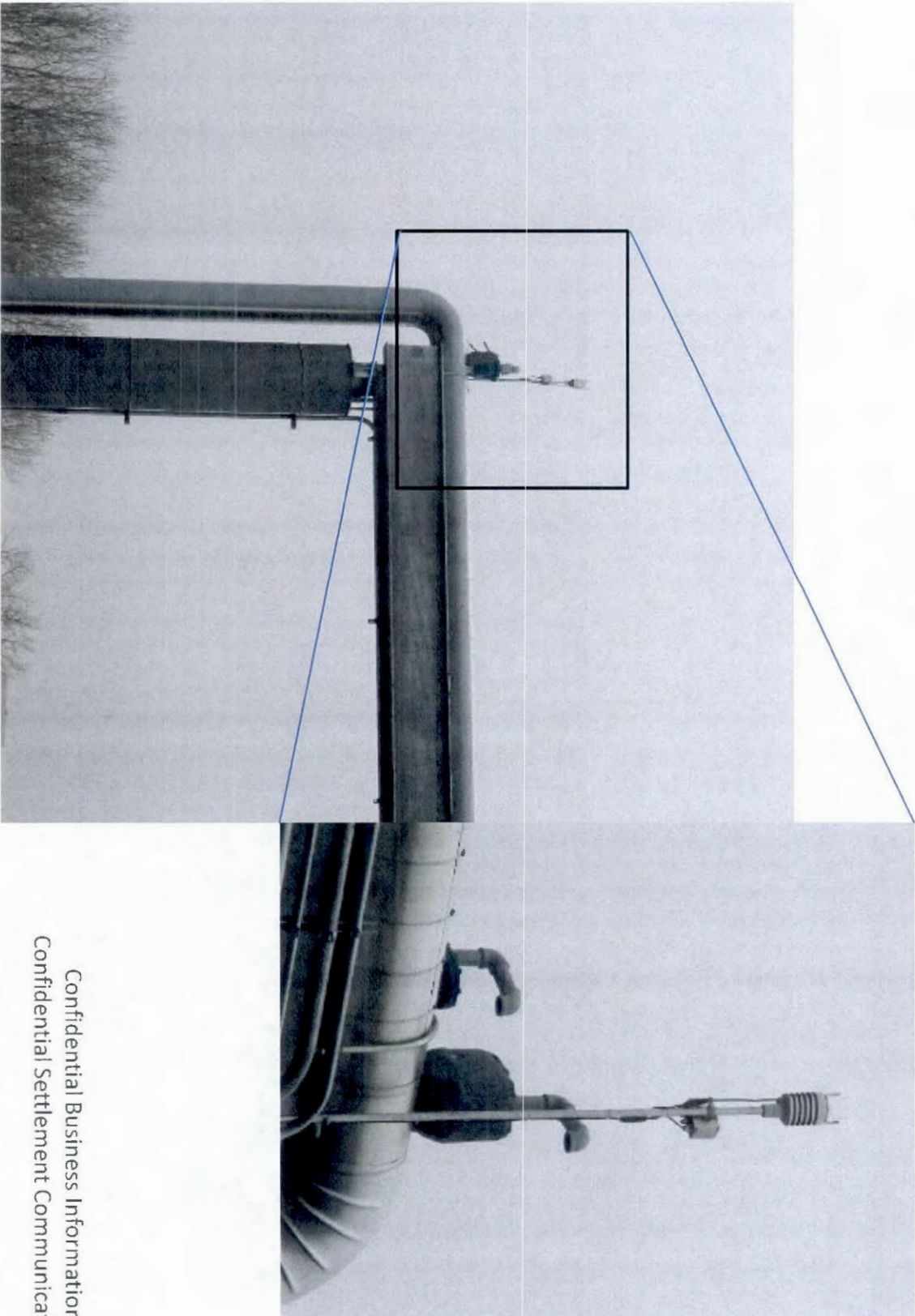
Confidential Business Information
Confidential Settlement Communication

Cannon System Overview



Confidential Business Information
Confidential Settlement Communication

Site Weather Station



Confidential Business Information
Confidential Settlement Communication

Water Truck



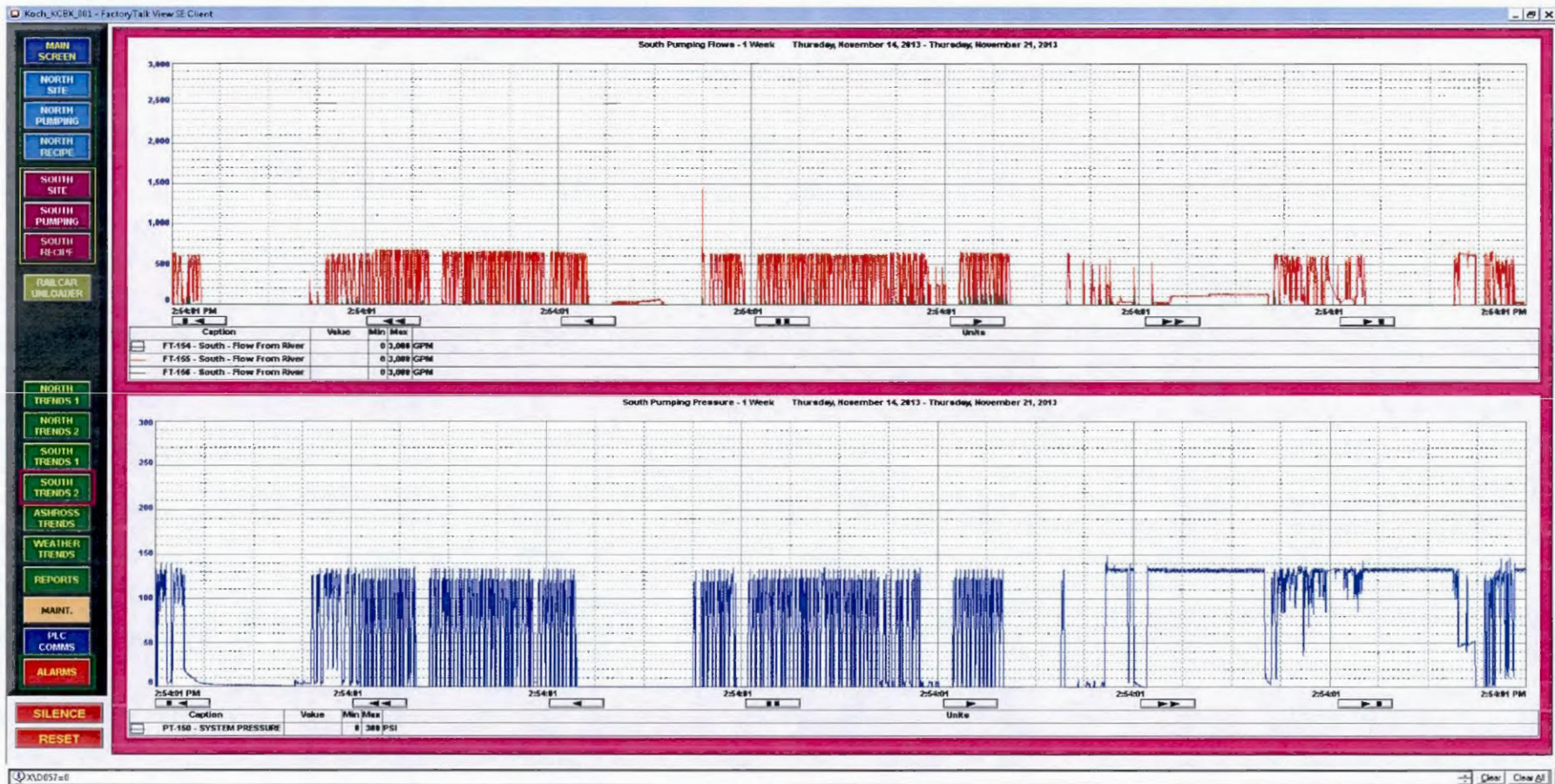
Confidential Business Information
Confidential Settlement Communication

Equipment Wheel Wash



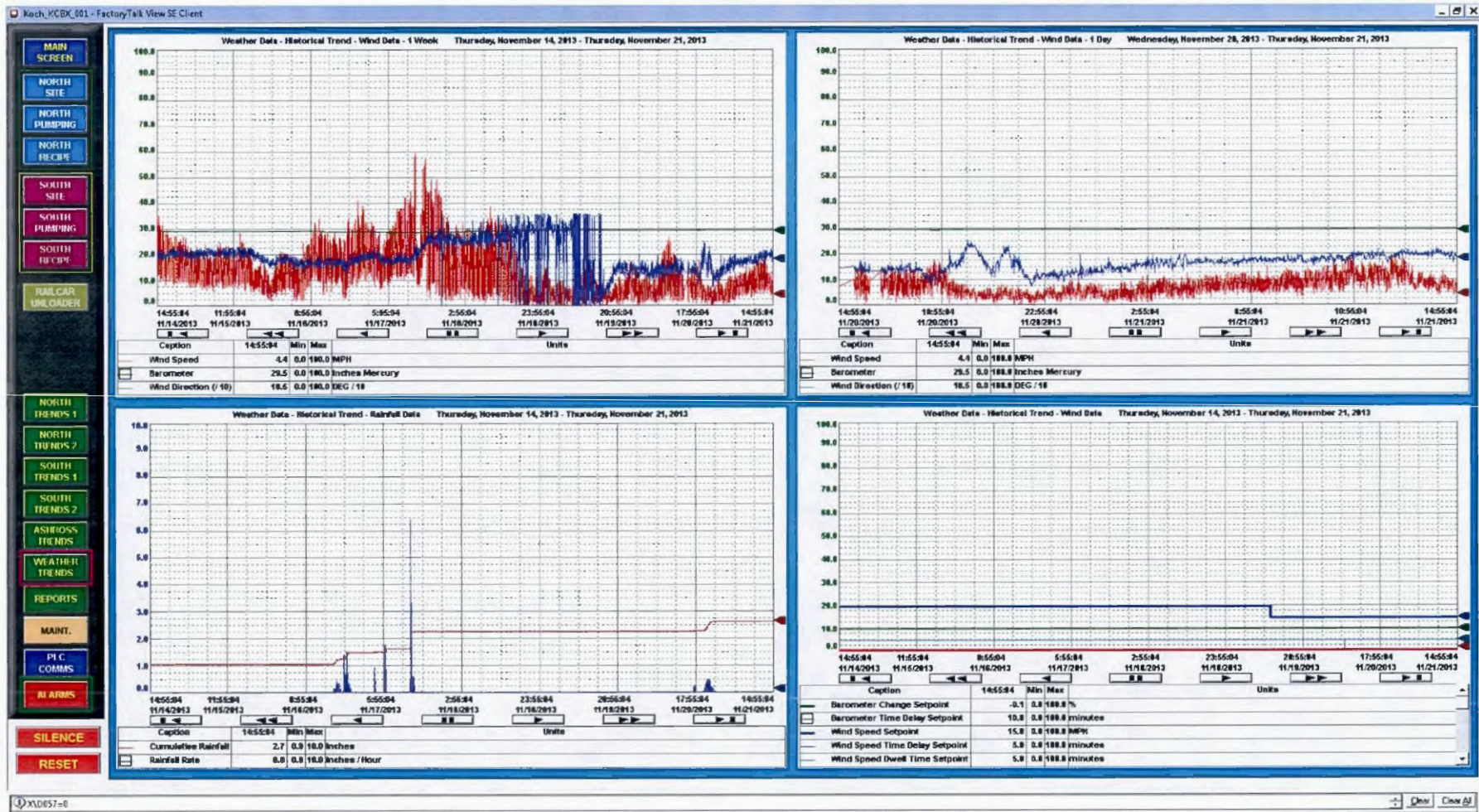
Confidential Business Information
Confidential Settlement Communication

System Data Tracking



Confidential Business Information
Confidential Settlement Communication

Weather System Data Monitoring/Collection



Confidential Business Information
 Confidential Settlement Communication

Proactive System Operation

- Daily weather forecast review (week in advance) in daily plan checklist
- Daily operational plan based on wind, temperature, pressure and precipitation data and forecasts
- Operational plan changes as actual weather conditions change

Training

- Employees
 - Formal FPOP/BMP training
 - Hands-on training
- Truck Drivers
 - Training
 - Card
- Contractors

Recap - System Components

- Water Cannon Sprays
 - Automation system
 - Proactive weather monitoring
- Surfactant and encrusting product addition
- Spray bars on conveyors and transfer points
- Water trucks
- Truck wheel wash
- Street sweeper (inside and outside Terminal)

Recap - System Components (cont.)

- Best Management Practices
 - Choke feeding
 - Pile management and grooming
 - Daily weather forecasting
 - Suspension of operations
- Training
 - Employees
 - Contractors
 - Truck Drivers

Winter Operations / Dust Mitigation

- Reduced traffic
- Treat inactive piles before onset of freezing conditions, as per FPOP
- Typically drain and winterize cannon system, as per FPOP
- Use of water truck as needed
- Suspend operations as needed

Questions/Comments?

Confidential Business Information
Confidential Settlement Communication