

**BEFORE THE ILLINOIS POLLUTION CONTROL BOARD**

Independence Pork LLC )  
(Property Identification Number ) PCB No.  
17-11-400-005) (Tax Certification)  
)

**NOTICE**


Steve Santarelli  
Illinois Department of Revenue  
101 West Jefferson  
Post Office Box 19033  
Springfield, Illinois 62794

Don Brown, Clerk  
Illinois Pollution Control Board  
James R. Thompson Center  
100 West Randolph Street, Suite 11-500  
Chicago, Illinois 60601

Carrie Pollard  
Pipestone Veterinary Services for  
Independence Pork; LLC  
2435 Bethany Rd.  
Sycamore, Illinois 60178

**PLEASE TAKE NOTICE** that I have today filed with the Office of the Clerk of the Pollution Control Board an APPEARANCE and the RECOMMENDATION OF THE ILLINOIS ENVIRONMENTAL PROTECTION AGENCY, a copy of which is herewith served upon you.

ILLINOIS ENVIRONMENTAL PROTECTION AGENCY

By:   
Christine M. Zeivel  
Assistant Counsel  
Division of Legal Counsel

DATED: November 22, 2017

Illinois Environmental Protection Agency  
1021 North Grand Avenue East  
Post Office Box 19276  
Springfield, Illinois 62794-9276  
(217) 782-5544

**THIS FILING IS SUBMITTED ON RECYCLED PAPER**

**BEFORE THE ILLINOIS POLLUTION CONTROL BOARD**

Independence Pork LLC )  
(Property Identification Number ) PCB No.  
17-11-400-005) (Tax Certification)  
)

**APPEARANCE**

The undersigned, as one of its attorneys, hereby enters an APPEARANCE on behalf of Respondent,  
Illinois Environmental Protection Agency.

**ILLINOIS ENVIRONMENTAL PROTECTION AGENCY**

By:   
Christine M. Zeivel  
Assistant Counsel  
Division of Legal Counsel

DATED: November 22, 2017

Illinois Environmental Protection Agency  
1021 North Grand Avenue East  
Post Office Box 19276  
Springfield, Illinois 62794-9276  
(217)782-5544

**THIS FILING IS SUBMITTED ON RECYCLED PAPER**

**BEFORE THE ILLINOIS POLLUTION CONTROL BOARD**

Independence Pork LLC )  
(Property Identification Number ) PCB No.  
17-11-400-005 ) (Tax Certification)  
)

**RECOMMENDATION OF THE ILLINOIS  
ENVIRONMENTAL PROTECTION AGENCY**

The Illinois Environmental Protection Agency ("Illinois EPA") hereby files its Recommendation pursuant to Section 125.204 of the regulations of the Illinois Pollution Control Board ("Board"), 35 Ill. Adm. Code 125.204.

1. On June 5, 2017, the Illinois EPA received a request from Independence Pork LLC (log number TC-138185, Exhibit A) for an Illinois EPA recommendation regarding the tax certification of water pollution control facilities pursuant to 35 Ill. Adm. Code 125.204.
2. The facility's address is: Independence Pork LLC  
4091 Maplewood Rd  
Waterman, IL 60556

The proposed water pollution control facilities in this request are located at the SE ¼ of Section 11, T37N, R4E of the 3rd P.M. in DeKalb County, at the above street address and consist of the following:

Livestock waste management facilities consisting of one concrete manure pit (approximately 250 ft. x 71 ft. x 8 ft.), the concrete slotted floor over the manure pit that captures and contains livestock waste, eight concrete pump out ports (approximately 6 ft. x 6 ft. x 8 ft. each), a plastic perimeter tile drain (approximately 6 in. x 2 in. x 758 ft.), and a concrete riser sampling port (approximately 2 ft. x 8 ft.) for monitoring the tile.

- These livestock waste management facilities are used to collect, store, and transport livestock waste prior to cropland application, and are further described in Exhibit A.
3. Section 11-10 of the Property Tax Code, 35 ILCS 200/11-10 (2016), and Section 125.200(a) of the Board's regulations, 35 Ill. Adm. Code 125.200(a), define "pollution control facilities" as:
    - any system, method, construction, device or appliance appurtenant thereto or any portion of any building or equipment, that is designed, constructed, installed or operated for the primary purpose of: eliminating, preventing, or reducing air or water pollution ...or treating, pretreating, modifying or disposing of any potential solid, liquid or gaseous pollutant which if released without treatment, pretreatment modification or disposal might be harmful, detrimental or offensive to human, plant or animal life, or to property.
  4. In order to receive preferential tax treatment as pursuant to 35 ILCS 200/11-5 (2016), pollution control facilities must be certified as such by the Board, 35 ILCS 200/11-20 (2016) and 35 Ill. Adm. Code 125.200(a).
  5. Upon receipt of a tax certification application, the Illinois EPA must file a recommendation on the application with the Board, 35 Ill Adm. Code 125.204(a).
  6. Based on the information in the application and the purpose of the facility, it is the Illinois EPA's engineering judgment that the described facilities may be considered "pollution control facilities," pursuant to 35 Ill. Adm. Code 125.200(a), with the primary purpose of eliminating, preventing, or reducing water pollution, or as otherwise provided in 35 Ill. Adm. Code 125.200, and are eligible for tax certification from the Board.

WHEREFORE, the Illinois EPA recommends that the Board issue the requested tax certification.

ILLINOIS ENVIRONMENTAL PROTECTION AGENCY

By:   
Christine M. Zeivel  
Assistant Counsel  
Division of Legal Counsel

Dated: November 22, 2017  
Illinois Environmental Protection Agency  
1021 North Grand Ave. E.  
P.O. Box 19276  
Springfield, Illinois 62794-9276  
217/782-5544



## ILLINOIS ENVIRONMENTAL PROTECTION AGENCY

1021 NORTH GRAND AVENUE EAST, P.O. BOX 19276, SPRINGFIELD, ILLINOIS 62794-9276 • (217) 782-3397

BRUCE RAUNER, GOVERNOR

ALEC MESSINA, DIRECTOR

# Memorandum

To: Charles Gunnarson, Division of Legal Counsel

From: Al Keller, Manager, Permit Section *AK*

Date: October 11, 2017

Re: Independence Pork, LLC  
Attn: Carrie Pollard  
2435 Bethany Rd.  
Sycamore, IL 60178  
Recommendation of Tax Certification  
Log # TC-138185  
Property ID # 17-11-400-005

The Bureau of Water received a request on June 5, 2017 from Independence Pork, LLC for an Illinois EPA recommendation regarding the tax certification of water pollution control facilities pursuant to 35 Ill. Adm. Code 125.204. We offer the following recommendation.

The water pollution control facilities in this request include the following:

Independence Pork, LLC  
4091 Maplewood Rd  
Waterman, IL

Section 11, T37N, R4E of the 3<sup>rd</sup> PM in DeKalb County

Livestock waste management facilities consist of a concrete pit (approximately 250 ft. x 71 ft. x 8 ft. deep), eight (8) concrete pump outs (approximately 6 ft. x 6 ft. x 8 ft. deep), a plastic perimeter tile drain (approximately 6 in. x 2 in. x 758 ft. in length), a concrete riser sampling port (approximately 2 ft. diameter x 8 ft. deep) and slotted floors over the pit. These livestock waste management facilities are used to collect, transport, and/or store livestock waste prior to cropland application.

These facilities are further described in the enclosed applications and supporting documents.

Based on the information included in this submittal, it is our engineering judgment that the above proposed facilities may be considered "Pollution Control Facilities" under 35 IAC 125.200(a), with the primary purpose of eliminating, preventing, or reducing water pollution, or as otherwise provided in this section, and therefore eligible for tax certification from the Illinois Pollution Control Board. The Bureau of Water therefore recommends that the Board issue the requested tax certification for these facilities.

If you have any questions regarding the above, please contact Jenny Larsen at 217/782-0610.

SAK:JML:Tax Certs\Livestock\TC-138185.docx

cc: Tax Cert File

4302 N. Main St., Rockford, IL 61103 (815)987-7760  
595 S. State, Elgin, IL 60123 (847)608-3131  
2125 S. First St., Champaign, IL 61820 (217)278-5800  
2009 Mall St., Collinsville, IL 62234 (618)346-5120

9511 Harrison St., Des Plaines, IL 60016 (847)294-4000  
5407 N. University St., Arbor 113, Peoria, IL 61614 (309)693-5462  
2309 W. Main St., Suite 116, Marion, IL 62959 (618)993-7200  
100 W. Randolph, Suite 11-300, Chicago, IL 60601 (312)814-6026

## Watershed Unit Tax Certification Review Sheet

---

Project Name: Independence Pork, LLC

Location: Waterman, IL

Reviewer: Jenny Larsen

Date: 07/06/2017

Log number: TC-138185

Type:  Agchem  
 Livestock

Applicant:  
Carrie Pollard  
2435 Bethany Rd.  
Sycamore, IL 60178

Contact: Carrie Pollard

Phone: (815)756-3279

Facility:  
4091 Maplewood Rd  
Waterman, IL 60556

Property ID: 17-11-400-005

County: DeKalb

Legal Description:  
S: 11 T: 37N R: 4E PM: 3<sup>rd</sup>

Signature: Carrie Pollard

Title: Technical Services Manager

Date Control Devices installed: 11/2016

Wastes:  Livestock waste is applied to cropland.  
 Agrichemical rinsate and spillage is recycled through the facility and/or land applied.  
 Other: \_\_\_\_\_

### Physical Description of Pollution Control Devices:

This facility includes one concrete manure pit measuring 250 ft. x 71 ft. x 8 ft. deep (refer to 6/5/2017 application), eight (8) concrete pump out ports each measuring 6 ft. x 6 ft. x 8 ft. deep (refer to 6/5/2017 application), a 6 in. x 2 in. x 758 ft. "Form a Drain" plastic tile drain (refer to email chain with Carrie Pollard), a 2 ft. diameter x 8 ft. deep concrete riser sampling port for monitoring the tile (refer to email chain with Carrie Pollard), and concrete slotted floors above the pits (refer to 6/5/2017 application). The schematic flow diagram of manure was submitted by email on 6/28/2017.

The primary purpose for these structures is to contain livestock waste thereby preventing contaminated water runoff. Recommended Action: Permit the above mentioned structures.

**Larsen, Jenny**

---

**From:** Carrie Pollard <Carrie.Pollard@pipestone.com>  
**Sent:** Thursday, July 06, 2017 8:24 AM  
**To:** Larsen, Jenny  
**Subject:** [External] RE: Flow diagram

6", virtually it is the size of a 2'x6

On Jul 6, 2017 7:57 AM, "Larsen, Jenny" <Jenny.Larsen@illinois.gov> wrote:

The website you sent me says that the form-a-drain comes in 4", 6" and 8" sizes. Do you know which one you have?

**From:** Carrie Pollard [mailto:Carrie.Pollard@pipestone.com]  
**Sent:** Wednesday, July 05, 2017 3:38 PM  
**To:** Larsen, Jenny <Jenny.Larsen@illinois.gov>  
**Subject:** [External] RE: Flow diagram

It's not a circular tile, it is a specific product that serves as both a concrete form, and stays in place after the concrete pour to form the tile (its hollow with small holes in it to allow water to pass into it).

<http://buildblock.com/products/accessories/form-a-drain/>

So, it is the length of the perimeter of the building

Advantage: 768'

Independence & Future: both 758'

Does that help?

**From:** Larsen, Jenny [mailto:Jenny.Larsen@illinois.gov]  
**Sent:** Wednesday, July 05, 2017 1:38 PM  
**To:** Carrie Pollard <Carrie.Pollard@pipestone.com>  
**Subject:** RE: Flow diagram



Carrie

What is the diameter and length of the "Form a Drain" plastic tile for each building?

Thanks,

Jenny

**From:** Carrie Pollard [<mailto:Carrie.Pollard@pipestone.com>]

**Sent:** Monday, July 03, 2017 1:52 PM

**To:** Larsen, Jenny <[Jenny.Larsen@illinois.gov](mailto:Jenny.Larsen@illinois.gov)>

**Subject:** [External] RE: Flow diagram

Each building has a "Form a Drain" plastic tile around the perimeter of the building. Each building also has an 8' deep, 2' diameter concrete riser used as a sampling port for monitoring the tile.

On Jun 29, 2017 9:39 AM, "Larsen, Jenny" <[Jenny.Larsen@illinois.gov](mailto:Jenny.Larsen@illinois.gov)> wrote:

Carrie,

I will not need you to add it to Section D. You can just reply to this email but I will need you to clarify the dimensions and construction material of both the perimeter tile drain and the sampling port.

Thanks,

*Jenny Larsen, P.E.*

Illinois Environmental Protection Agency

Bureau of Water

Permit Section

(217)785-3438

**From:** Carrie Pollard [<mailto:Carrie.Pollard@pipestone.com>]

**Sent:** Wednesday, June 28, 2017 3:08 PM

**To:** Larsen, Jenny <[Jenny.Larsen@illinois.gov](mailto:Jenny.Larsen@illinois.gov)>

**Subject:** [External] Flow diagram

Jenny-

Attached is a flow diagram that will hopefully meet the requirements for Section G.

As I thought more about it, lets go ahead & include the sampling port & tile drain in the facility certification.

To do that, I'm assuming that I need to add it to the Section D, under the description, or can I just write an additional letter clarifying to include it (vs. a statement clarifying to withdraw it).

It would not change the dollar values, as it is so small.

Thanks,

Carrie

*Please take note of new email: [carrie.pollard@pipestone.com](mailto:carrie.pollard@pipestone.com)*

**Carrie Pollard, MS**

Pipestone Veterinary Services – Bethany

Technical Services Manager

2435 Bethany Road

Sycamore, IL 60178

Office: 815.756.3279

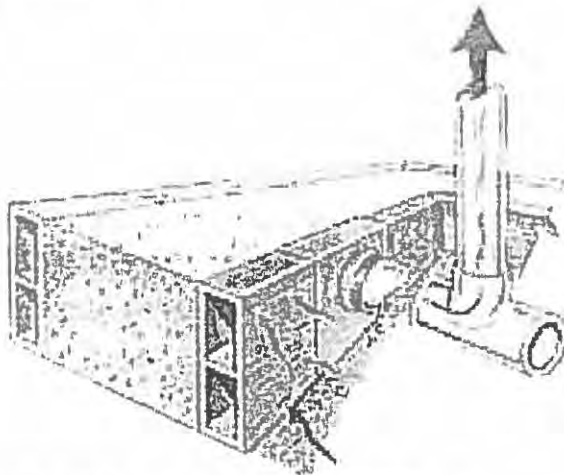
Cell: 815.757.9201

[carrie.pollard@pipestone.com](mailto:carrie.pollard@pipestone.com)

[www.bethanywine.com](http://www.bethanywine.com)



## Form-a-Drain



(<http://buildblock.com/wp-content/uploads/2013/06/Form-a-drainRadonVenting400.jpg>)

Form-A-Drain Venting

FORM-A-DRAIN® is the 3-in-1 foundation solution that forms footings, provides an integrated drainage system, and can be easily adapted to vent radon where needed. Designed for residential basement applications, Form-A-Drain consists of lineal sections installed as the foundation footing forms. Unlike standard wood forms, Form-A-Drain lineals stay in place permanently after completion of the concrete pour and because they form a complete sub-slab perimeter loop around the foundation, Form-A-Drain functions as a foundation drainage and a radon collection system as well. Since it stays in place, Form-A-Drain also shaves valuable time from the construction schedule; there's no need for a crew to return the next day to remove, strip, clean and transport forms to the next jobsite.

The 6", 8", & 10" Form-A-Drain system exceeds all applicable code requirements for foundation drainage systems *and meets those code requirements in superior fashion to HDPE corrugated pipe.*

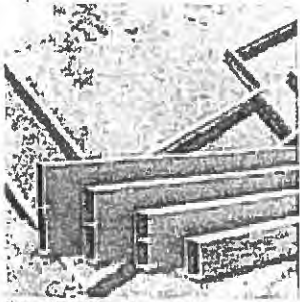
Form-A-Drain is a dual footing form that creates parallel dedicated drainage pathways tight to both sidewalls of the footing. This unique arrangement of large, connected drainage pathways ensures that water is channeled around the building perimeter at the optimal height relative to footings and slabs (the configuration of Form-A-Drain lineals ensures that the bottom of the drain path is at least 6" below the bottom of the basement slab); in practice, HDPE corrugated pipe is seldom installed at a consistent height relative to footings. Furthermore, corrugated pipe is often installed in discontinuous sections that may not be visible at the time of inspection. Because Form-A-Drain is installed prior to footing pour, the entire continuous system is fully visible at the time of footing inspection.

Form-A-Drain is available with lateral components that connect the lineals to daylight (where the site configuration will permit such) or the sump pit required by IRC 405. This same section does not require a dedicated interior footing drain pathway, only a porous layer of sand or gravel with a provision for mechanical discharge - i.e. the sump pit and pump. Form-A-Drain exceeds this code requirement by creating a dedicated pathway tight to the footing, channeling water at exactly the position where it can be the most effective - at the outside perimeter of the basement slab.

### An Evolution in Footing Construction, Drainage, and Radon Evacuation

7/6/2017

Form-a-Drain



(<http://buildblock.com/wp-content/uploads/2013/06/4formfadbanner-small.jpg>)

Form-A-Drain Forms

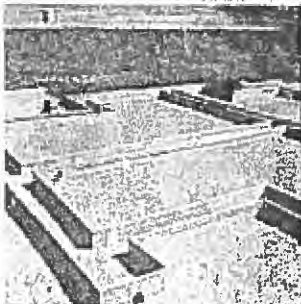
We highly recommend and use Form-A-Drain® for sub-surface water drainage in the construction of all basements. Take a moment to view this section and you'll see why we believe Form-A-Drain is the best product available for this very important aspect of basement construction.

Form-a-Drain forms precise foundation footings, with an ideally located foundation drainage system above the bottom of the footing and below the foundation wall. The system allows for simple adaptation to function as an effective means for radon reduction since it forms a complete loop around the foundation.

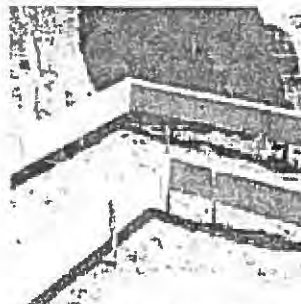
Installing FORM-A-DRAIN® is simple using lineals, couplings, and corners which ensure a precise form setup. The entire system is left permanently in place, eliminating the need to return to strip, remove, clean, and transport forms to the next jobsite.

## What is Form-A-Drain and how does it work?

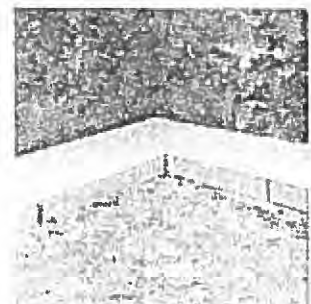
- Form-A-Drain® is a complete, permanently installed system that forms footings, drains foundations, and provides a sub-slab perimeter radon reduction system. CertainTeed designed and developed FORM-A-DRAIN, a patented combination footing form system, foundation drainage system, and radon reduction system for residential basement applications.
- The system consists of lineal sections installed as the foundation footing forms. Upon completion of the concrete pour, the system stays permanently in place and performs the function of a foundation drainage system.
- It is also an effective method of reducing radon, since it is a sub-slab perimeter system that forms a complete loop around the foundation.
- FORM-A-DRAIN is the subject of BOCA Research Report #95-37, renewed annually.



([http://buildblock.com/wp-content/uploads/2013/06/img199-margin\\_small.gif](http://buildblock.com/wp-content/uploads/2013/06/img199-margin_small.gif))



(<http://buildblock.com/wp-content/uploads/2013/06/FADFORMS.jpg>)



(<http://buildblock.com/wp-content/uploads/2013/06/FADFORMSWITHCONCRETE.jpg>)



## Homeowner Features and Benefits

Builders and contractors alike now have a revolutionary way to design a superior foundations system into their homes.

### Features

- Ideally located drainage system, parallel to footing, below foundation wall
- Drainage system cannot sag or crimp
- Greater water intake capacity than traditional drain pipe, 50% more water inlet area than minimum ASTM standards
- Level installation
- Smooth interior wall
- Drainage is provided for both the inside and outside of foundation footing build-up and clogging
- Strong, rigid PVC construction; greater stiffness
- Conforms with EPA's " Model Standards & Techniques for Radon Control in New Residential Buildings" and ASTM E 1465-92 Standard Guide for Radon Control Options

### Homebuilder Benefits

- Relieves hydrostatic pressure on walls and slabs, reducing risk of cracking
- Reduces risk of blockage or uneven drainage
- Ensures rapid collection of ground water; minimizes possibility of water infiltration
- Uniform drainage of foundation, easier to set wall forms
- Allows for free flow of water and less chance of build-up and clogging
- Better drainage protection against water infiltration; reduces risk of cracking and leaking
- Minimizes possibility of system failure due to a collapsed or crushed drainage system
- Acceptance by local code officials and inspectors

## Contractor Features and Benefits

### Features

- Stay-In-Place lineal footing form system
- Less elapsed time between footing pour and wall construction
- Immediate drainage capability
- Simple adaptation with a round pipe "T" and vertical PVC pipe stack provides radon reduction
- Eliminates need for conventional corrugated poly drain tile
- Complete line of lineals, couplings, 90° and 45° corners, vertical T's & L's, outlets, and accessory items
- No oiling of forms required
- Dry fit joints allow for job site assembly without the use of solvent cement or mechanical fasteners
- Easy to cut with hand or power saw
- Spacer straps available in pre-determined width dimensions

### Contractor Benefits

- Eliminates wood or metal form cost and form removal, cleaning, and transportation costs
- Reduces carrying cost expense
- Can minimize down time in inclement weather
- Eliminates material and labor costs for separate
- Reduces material and labor associated with drain tile installation
- Can accommodate virtually any foundation layout
- Reduced oil cost and elimination of oil handling and disposal
- Reduced form set-up time
- No additional or special tools required for cutting; fast installation
- Improved set-up time by reducing time used for measuring

## System Components

Form-A-Drain lineals are manufactured from PVC (polyvinyl chloride) material using high content of recycled materials, in convenient 12-foot lengths. Three full dimensional sizes are available: 4", 6" and 8" - all sizes are 2-1/4" wide. Each 12-foot lineal weighs less than 6 pounds in 4", less than 8 pounds in 6", and less than 11 pounds in 8", for ease of transportation, handling, and joining. Accessories are available, including couplings, corners, drainage outlets, T's, and vertical angle pieces. Grade stakes can be left in place; they do not have to be pulled. Spacer straps are available in various widths to ensure proper footing width. All fittings and accessory items are made to precise CertainTeed product specifications. Fittings are manufactured for easy assembly without mechanical or solvent fastening. Lineals can be cut easily with a hand or power saw to exact lengths required.

Visit the manufacturer's website to learn more:

<http://www.naspecialtyproducts.com/Public/Products/Foundation-Building-Products/Form-A-Drain-23.html>  
 (http://www.naspecialtyproducts.com/Public/Products/Foundation Building Products/Form A Drain 23.htm)



**Larsen, Jenny**

---

**From:** Carrie Pollard <Carrie.Pollard@pipestone.com>  
**Sent:** Monday, July 03, 2017 1:52 PM  
**To:** Larsen, Jenny  
**Subject:** [External] RE: Flow diagram

**Follow Up Flag:** Follow up  
**Flag Status:** Flagged

Each building has a "Form a Drain" plastic tile around the perimeter of the building.  
Each building also has an 8' deep, 2' diameter concrete riser used as a sampling port for monitoring the tile.

On Jun 29, 2017 9:39 AM, "Larsen, Jenny" <Jenny.Larsen@illinois.gov> wrote:

Carrie,

I will not need you to add it to Section D. You can just reply to this email but I will need you to clarify the dimensions and construction material of both the perimeter tile drain and the sampling port.

Thanks,

*Jenny Larsen, P.E.*

Illinois Environmental Protection Agency

Bureau of Water

Permit Section

(217)785-3438

**From:** Carrie Pollard [mailto:Carrie.Pollard@pipestone.com]  
**Sent:** Wednesday, June 28, 2017 3:08 PM  
**To:** Larsen, Jenny <Jenny.Larsen@illinois.gov>  
**Subject:** [External] Flow diagram

Jenny-

Attached is a flow diagram that will hopefully meet the requirements for Section G.

As I thought more about it, lets go ahead & include the sampling port & tile drain in the facility certification.

To do that, I'm assuming that I need to add it to the Section D, under the description, or can I just write an additional letter clarifying to include it (vs. a statement clarifying to withdraw it).

It would not change the dollar values, as it is so small.

Thanks,

Carrie

*Please take note of new email: [carrie.pollard@pipestone.com](mailto:carrie.pollard@pipestone.com)*

**Carrie Pollard, MS**

Pipestone Veterinary Services – Bethany

Technical Services Manager

2435 Bethany Road

Sycamore, IL 60178

Office: 815.756.3279

Cell: 815.757.9201

[carrie.pollard@pipestone.com](mailto:carrie.pollard@pipestone.com)

[www.bethanyswine.com](http://www.bethanyswine.com)



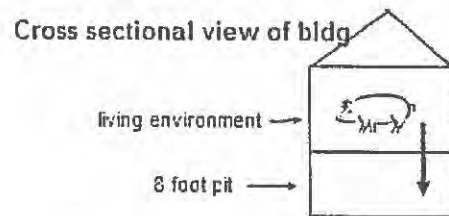


Application for Pollution Control Facility

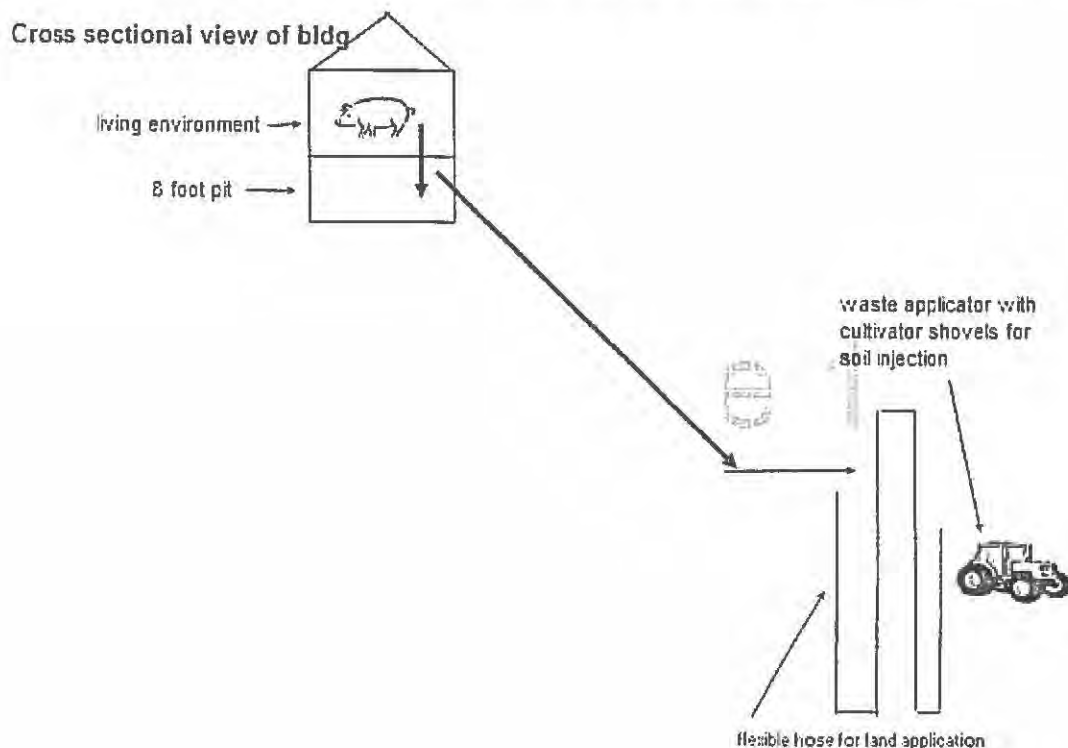
Section G – Section D - FLOW DIAGRAM

Concrete manure pits under these swine buildings should eliminate any pollution. The parts of the structure would be the slatted concrete floor, the pit itself, and associated structural components (beams, columns, etc.), and pumpout structures that are part of the pit to allow for equipment access for manure removal at designated times.

Manure travels from the pig, vertically through the concrete slatted floor into the 8' deep concrete pits.



Two to three times per year, that manure is then pumped via dragline or tankers & injected directly into nearby farmland for nutrient values.



Home » Data » Public Land Survey System (PLSS)

## Public Land Survey System (PLSS)

**Instructions:** This web page will allow you to enter an Illinois address and determine its legal description to the section level-of-detail. The Public Land Survey System (PLSS) is used in legal descriptions and employs a grid system described in terms of numbered townships, ranges, and sections. Please follow the instructions below. **Note:** If the Google Maps application below is not displayed, make sure to enable Javascript on your Internet browser.

1. Enter your address in the box below and click "Search Address." Address location is provided by Google geolocation service.
2. Please check that location is accurate. If not, see step 4.
3. An information window will appear listing the County, Township, Range, and Section for the marker location. Also listed is the Principal Meridian from which that area was surveyed, USGS 7.5-minute Quadrangle name, Civil Township or Precinct name, and Latitude/Longitude coordinates.
4. If you would like to move the marker due to an incorrect geolocation, first close the information window by clicking on the "X" in the top right corner, then drag the marker to a new location. A new information window will appear with the new location information.

4091 Maplewood Rd Waterman IL

Search Address

Refresh Page

County	Township	Range	Section	Principal Meridian	
DeKalb	37N	4E	11	3	Somonauk

Quadrangle Name	Victor Township
-----------------	-----------------

Latitude	41.6915570	Longitude	88.7391020
----------	------------	-----------	------------

World Geodetic System of 1984 (WGS84)

**Legend**

Counties

Townships

Sections

Go Map | Report a map error

Illinois State Geological Survey | PLSS data 2013/10/28

### ISGS PLSS Data Explanation

The data set within the Google Maps viewer contains Illinois Public Land Survey System (PLSS) boundaries.

TC-138185

JML

APPLICATION FOR CERTIFICATION (PROPERTY TAX TREATMENT)  
 POLLUTION CONTROL FACILITY  
 AIR  WATER

ILLINOIS ENVIRONMENTAL PROTECTION AGENCY  
 P. O. Box 19276, Springfield, IL 62794-9276

This Agency is authorized to request this information under Illinois Revised Statutes, 1979, Chapter, 120, Section 502a-5. Disclosure of this information is voluntary. However, failure to comply could prevent your application from being processed or could result in denial of your application for certification.

RECEIVED  
 JUN 05 2017

FOR AGENCY USE

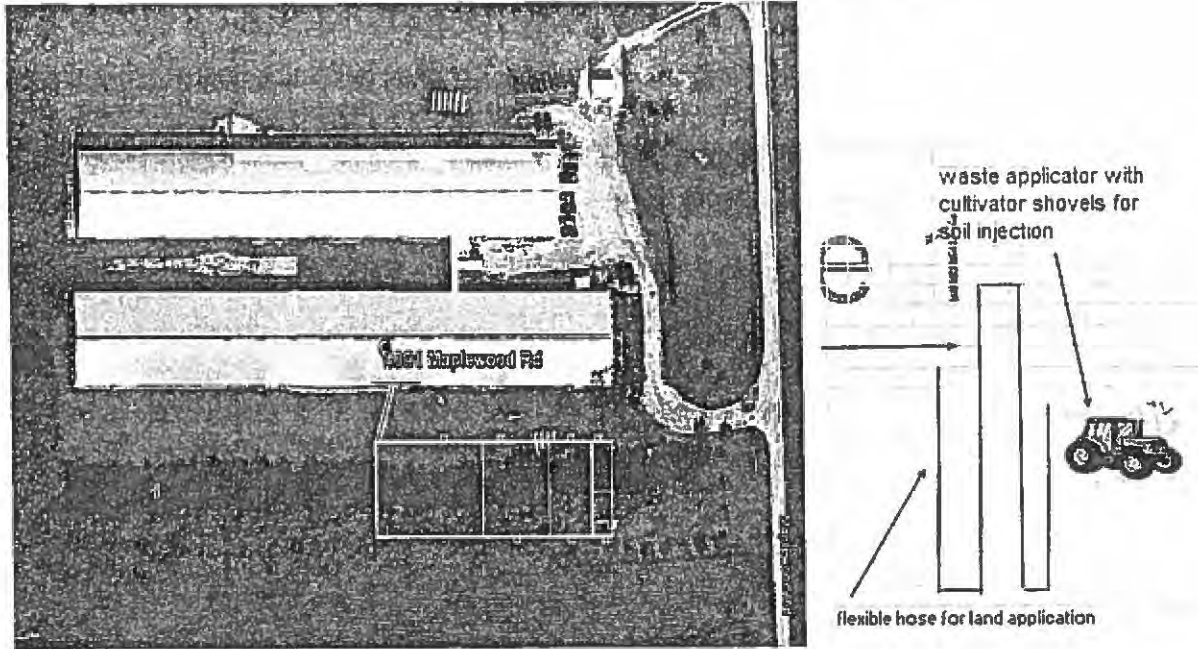
IEPA  
 SECTION

File No.	Date Received	Certification No.	Date
Sec. A  APPLICANT	Company Name <i>Independence Park, LLC</i>		
	Person Authorized to Receive Certification <i>Carrie Pollard</i>		Person to Contact for Additional Details <i>Carrie Pollard</i>
	Street Address <i>2435 Bethany Rd.</i>		Street Address <i>2435 Bethany Rd.</i>
	Municipality, State & Zip Code <i>Sycamore IL 60178</i>		Municipality, State & Zip Code <i>Sycamore, IL 60178</i>
	Telephone Number <i>815-756-3279</i>		Telephone Number <i>815-756-3279</i>
	Location of Facility Quarter Section <i>SE</i> Township <i>37N</i> Range <i>4E</i>		Municipality <i>Waterman</i> Township <i>Victor</i>
	Street Address <i>4091 Maplewood Rd., Waterman</i>		County <i>DeKalb</i> Book Number
	Property Identification Number		Parcel Number <i>17-11-400-005</i>
Sec. B  MANUFACTURING OPERATIONS	Nature of Operations Conducted at the Above Location <i>Swine Production - Specifically, breeding, gestation + farrowing operations of a 2800 hd farm. This new facility houses a gilt development unit</i>		
	Water Pollution Control Construction Permit No.	Date Issued	
	NPDES PERMIT No.	Date Issued	Expiration Date
	Air Pollution Control Construction Permit No.	Date Issued	
	Air Pollution Control Operating Permit No.	Date Issued	
Sec. C  MANUFACTURING PROCESS	Describe Unit Process		
	Materials Used in Process		
Sec. D  POLLUTION CONTROL FACILITY DESCRIPTION	Describe Pollution Abatement Control Facility <i>Manure control structure that includes a 1500 hd gilt development facility, including the concrete slotted floors, the 8' deep manure pit (71' x 250') and eight (6' x 6' x 8' deep) concrete pumpouts.</i>		

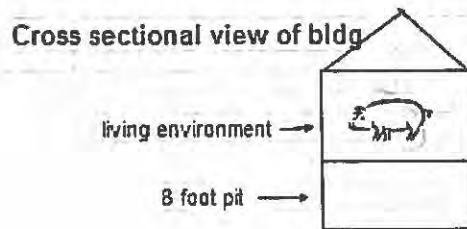
Sec. E	(1) Nature of Contaminants or Pollutants		
CONTAMINANTS		Material Retained, Captured or Recovered	
	Contaminant or Pollutant	DESCRIPTION	DISPOSAL OR USE
	<i>Liquid swine waste.</i>	<i>From pigs</i>	<i>land applied to adjacent fields</i>
	(2) Point(s) of Waste Water Discharge		
	Plans and Specifications Attached	Yes <input checked="" type="checkbox"/>	No <input type="checkbox"/>
(3)	Are contaminants (or residues) collected by the control facility?	Yes <input checked="" type="checkbox"/>	No <input type="checkbox"/>
(4)	Date installation completed <i>11/2016</i> status of installation on date of application <i>Complete</i>		
ACCOUNTING DATA	(5) a.	FAIR CASH VALUE IF CONSIDERED REAL PROPERTY:	\$ <i>400,000</i>
	b.	NET SALVAGE VALUE IF CONSIDERED REAL PROPERTY:	\$
	c.	PRODUCTIVE GROSS ANNUAL INCOME OF CONTROL FACILITY:	\$
	d.	PRODUCTIVE NET ANNUAL INCOME OF CONTROL FACILITY:	\$
	e.	PERCENTAGE CONTROL FACILITY BEARS TO WHOLE FACILITY VALUE:	% <i>40</i>
Sec. F	The following information is submitted in accordance with the Illinois Property Tax Code, as amended, and to the best of my knowledge, is true and correct. The facilities claimed herein are "pollution control facilities" as defined in Section 11-10 of the Illinois Property Tax Code.		
SIGNATURE	<i>Clavin R. Pollard</i>	<i>Technical Services Mgr.</i>	
	Signature	Title	
Sec. G	INSTRUCTIONS FOR COMPILING AND FILING APPLICATION		
	General: Separate applications must be completed for each control facility claimed. Do not mix types (water and air). Where both air and water operations are related, file two applications. If attachments are needed, record them consecutively on an index sheet.		
INSTRUCTIONS	Sec. A	Information refers to applicant as listed in the tax records and the person to be contacted for further details or for inspection of facilities. Define facility location by street address or legal description. A plat map location is required for facilities located outside of municipal boundaries. The property identification number is required.	
	Sec. B	Self-explanatory. Submit copies of all permits issued by local pollution control agencies. (e.g. MSD Construction Permit)	
	Sec. C	Refers to manufacturing processes or materials on which pollution control facility is used.	
	Sec. D	Narrative description of the pollution control facility, indicating that its primary purpose is to eliminate, prevent or reduce pollution. State the type of control facility. State permit number, date, and agency issuing permit. A narrative description and a process flow diagram describing the <u>pollution control facility</u> . Include a listing of each major piece of equipment included in the claimed fair cash value for real property. Include an <u>average</u> analysis of the influent and effluent of the control facility stating the collection efficiency.	
	Sec. E	List air contaminants, or water pollution substances released as effluents to the manufacturing processes. List also the final disposal of any contaminants removed from the manufacturing processes. Item (1) – Refers to pollutants and contaminants removed from the process by the pollution control facility. Item (2) – Refers to water pollution but can apply to water-carried wastes from air pollution control facilities. Submit drawings, which clearly show (a) Point(s) of discharge to receiving stream, and (b) Sewers and process piping to and from the control facility. Item (3) – If the collected contaminants are disposed of other than as wastes, state the disposition of the materials, and the value in dollars reclaimed by sale or reuse of the collected substances. State the cost of reclamation and related expense. Item (4) – State the date which the pollution control facility was first placed in service and operated. If not, explain. Item (5) – This information is essential to the certification and assessment actions. This accounting data must be completed to activate project review prior to certification by this Agency.	
	Sec. F	Self-explanatory. Signature must be a corporate authorized signature.	
	Submit to:	Attention:	Attention:
	Illinois EPA P.O. Box 19276 Springfield, IL 62794-9276	Al Keller Permit Section Division of Water Pollution Control	Donald E. Sutton Permit Section Division of Air Pollution Control

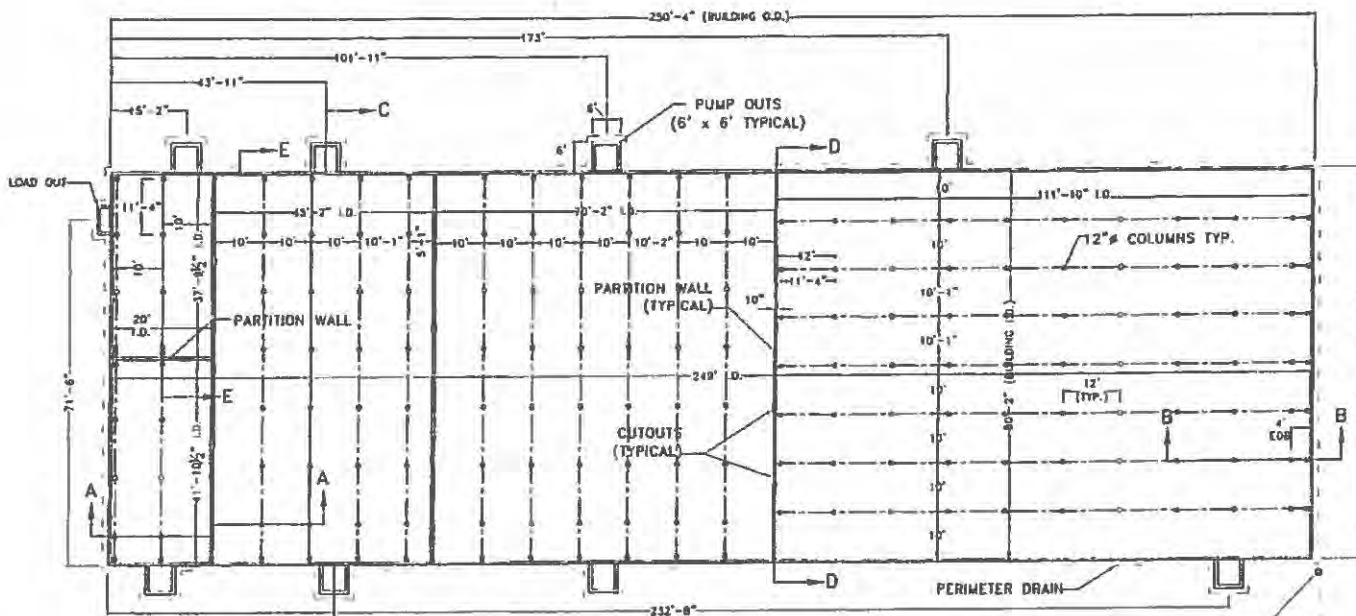
**Independence Pork, LLC**

**Application for pollution control facility**



This swine facility utilizes concrete slats in the building, with all waste contained & stored in the 8' deep pit under the building. The waste is then land applied using a flexible drag hose reel to adjoining fields. The concrete pumpouts, 6' x 6', allow for waste agitation & removal from the pit. An operator is at all times in view of the land application equipment in case of equipment failure.





**GENERAL NOTES**

- 1.) ANY REVISIONS TO THESE DRAWINGS MUST BE APPROVED BY THE PROJECT ENGINEER OF THE COMPANY LISTED IN THE TITLE BLOCK.
- 2.) CONCRETE CONSTRUCTION SHALL MEET WITH MIDWEST PLAN SERVICE-36, CONCRETE MANURE STORAGE UNLESS NOTED OTHERWISE.
- 3.) NO CONCRETE SHALL BE PLACED ON ON ICE, SNOW OR FROZEN FOUNDATION MATERIAL. THE CONTRACTOR SHALL BE RESPONSIBLE FOR ALL CONCRETE DAMAGED BY LOW TEMPERATURES AND SHALL REMOVE AND REPLACE ANY CONCRETE SO DAMAGED AT HIS/HER EXPENSE.
- 4.) THE METHOD AND MANNER OF PLACING CONCRETE SHALL BE SUCH AS TO AVOID SEGREGATION OR SEPARATION OF THE AGGREGATES OR THE DISPLACEMENT OF THE REINFORCEMENT.
- 5.) THE FOOTINGS ARE TO BE CONSTRUCTED WITH A MINIMUM OF 3,000 PSI CONCRETE.
- 6.) ALL WALLS, COLUMNS, AND FLOORS ARE TO BE CONSTRUCTED OF 4,000 PSI CONCRETE.
- 7.) THE CONCRETE PAD WILL BE A CONTINUOUS POUR.
- 8.) EXTERIOR WALL CONSTRUCTION JOINTS WILL BE INSTALLED AT 100' O.C. MAXIMUM, UNLESS OTHERWISE NOTED.
- 9.) NO VEHICLE LOADS ALLOWED WITHIN 5' OF PIT/GUTTER WALLS.
- 10.) NO PIPE PENETRATIONS OTHER THAN THE TYPES IDENTIFIED ON THESE DRAWINGS ARE ALLOWED. ALL WALL AND FLOOR PENETRATIONS, INCLUDING PIPE PENETRATIONS MUST BE APPROVED BY THE PROJECT ENGINEER.
- 11.) THE PRESUMED SOIL BEARING CAPACITY IS 2,000 LBS./SQ. FT., BASED ON NRCS CODE 313-3 TABLE 2.
- 12.) THE DESIGN OF THIS BUILDING IS BASED ON THE 2,000 LBS./SQ. FT. SOIL BEARING.
- 13.) WATERSTOP SHALL BE INSTALLED IN ACCORDANCE WITH MANUFACTURER INSTRUCTIONS.
- 14.) PRECAST CONCRETE SLATS & BEAMS SHALL BE GROUTED TIGHT.

SAMPLING PORT

DRAIN TO DAYLIGHT  
(FIELD VERIFY LOCATION)

**Frank & West**  
Environmental Engineers, Inc.  
7220 N. State Route 29  
Springfield, IL 62707  
Phone: 217/487-7888  
Fax: 217/487-7087

INDEPENDENCE PORK, LLC

PLAN VIEW

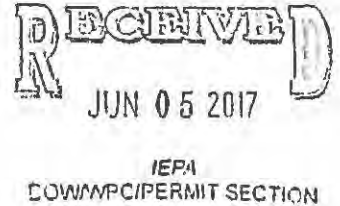
DRAWN BY: CEO

2016 © FRANK & WEST ENVIRONMENTAL ENGINEERS, INC. THESE PLANS AND SPECIFICATIONS ARE THE PROPERTY OF FRANK AND WEST ENVIRONMENTAL ENGINEERS, INC. ARE ONLY FOR THIS PROJECT AND MAY NOT BE USED, COPIED OR DUPLICATED WITHOUT PRIOR WRITTEN CONSENT.

SCALE: AS SHOWN | DATE: 02/05/16 | REVISED ON: 05/10/16 | DRAWING NO. 15-22813

May 22, 2017

IL EPA  
Al Keller  
Permit Section  
Division of Water Pollution Control  
PO Box 19276  
Springfield, IL 62794-9281



Mr. Keller:

Included are five applications for certification of pollution control facilities.

Advantage Pork, LLC

Future Pork, LLC

Independence Pork, LLC

Precision Pork, LLC

Elite Pork, LLC

If you have any questions on any of these facilities, please feel free to contact Carrie Pollard at Pipestone Veterinary Services at 815-756-3279.

Sincerely,

A handwritten signature in cursive script that reads "Carrie R. Pollard".

Carrie Pollard

Technical Services Manager

STATE OF ILLINOIS

COUNTY OF SANGAMON

)  
)  
)  
)  
)

**CERTIFICATE OF SERVICE**

I, the undersigned attorney at law, hereby certify that I have served on the date of November 22, 2017, the attached **NOTICE, APPEARANCE and RECOMMENDATION OF THE ILLINOIS ENVIRONMENTAL PROTECTION AGENCY**, upon the following persons by causing to be mailed a true copy thereof in an envelope duly addressed, bearing proper first class postage, and deposited in the United States mail at Springfield, Illinois:

Steve Santarelli  
Illinois Department of Revenue  
101 West Jefferson  
P.O. Box 19033  
Springfield, Illinois 62794

Carrie Pollard  
Pipestone Veterinary Services  
for Independence Pork LLC  
2435 Bethany Rd.  
Sycamore, Illinois 60178

**[Electronic Filing]**

Clerk  
Illinois Pollution Control Board  
James R. Thompson Center  
100 West Randolph Street, Suite. 11-500  
Chicago, Illinois 60601

ILLINOIS ENVIRONMENTAL PROTECTION AGENCY

/s/ Christine M. Zeivel  
Assistant Counsel  
Division of Legal Counsel  
1021 North Grand Avenue East  
P.O. Box 19276  
Springfield, Illinois 62794-9276  
217.782.5544  
217.782.9143 (TDD)

**THIS FILING IS SUBMITTED ON RECYCLED PAPER**